



## Enzymatic Floor Cleaner & Drain Maintainer

Floorzyme Floor Cleaner & Drain Maintainer is two products in one!

**1. It's a Floor Cleaner!** Deep cleaning detergents are combined with odor removing enzymes to thoroughly clean kennel and interior and exterior run surfaces.

**2. It's a Drain Maintainer!** The solution, when washed down floor drains, works to degrade organic matter helping to keep drains and traps flowing free and operating efficiently.

### FEATURES:

Enzymatic Action - Deodorizes

No Harsh Chemicals

### ADVANTAGES:

Highly Concentrated - Easy to Dilute

Multi-Task Solution

### BENEFITS:

Reduces Costly Drain & Trap Maintenance

### APPLICATIONS:

Kennel Floors - Stable Floors - Grooming Area Floors

Interior & Exterior Run Surfaces - Animal Cages

Animal Containment Floors

### SPECIFICATIONS:

Color: White Opaque Liquid

Fragrance: Pleasant Deodorizing

pH Range: 7.5-8.5

Dilution Ratio: See Container Label

Viscosity: Water Like

Conditions to Avoid: Excessive Heat or Cold

(See reverse side for Material Safety Data Information)

**TEC-Chem**  
Ideas To Solutions

Phone: 256-575-2491

FAX: 256-259-4370

### USE DIRECTIONS:

- ✓ Dilute 2 to 8 ounces of cleaner with water, depending on soil buildup.
- ✓ Apply solution using an automatic spray-wash system, manual sprayer or mop bucket.
- ✓ Agitate surface using a deck brush or mop.
- ✓ Rinse solution down the drain.
- ✓ Allow to air dry.

### USE LAS DIRECCIONES:

- ✓ Diluye 2 a 8 onzas de limpiador con agua, dependiendo del aumento de tierra.
- ✓ Aplique la solución usar un sistema automático del lavado del rocío, cubo manual de atomizador o fregona.
- ✓ Agite usar de superficie un cepillo de plataforma o fregona.
- ✓ Aclare la solución abajo el desagadero.
- ✓ Permita al aire seca.



**PTEC-305**

## Total Environment Control Systems



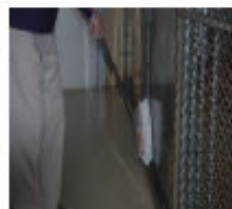
1. Remove animal(s), bedding, toys, food & water dishes and all loose debris, including feces from floor surface.



2. Spray-wash all surfaces, including floor, walls, ceilings and gates to remove all remaining debris, urine, etc.



3. Use a pump-sprayer or mechanical spray devise to apply a properly diluted mixture of *Floorzyme* to the entire surface area.



4. Use a medium or coarse brush to agitate the surface.



5. Spray rinse all surfaces, directing the solution towards the floor drains.



# MSDS

## Material Safety Data Sheet

24 HR EMERGENCY # 1-(800) 535-5053

### I. IDENTIFICATION

#### A. PRODUCT

1. Product Number: PTEC-305
2. Product Name: Floorzyme
3. Chemical Family: Bacteriological cultures
4. Formula: Proprietary

#### B. COMPANY IDENTIFICATION

MANUFACTURED BY:  
TEC-Chem LLC  
30290 US Hwy 72  
Hollywood, AL 35752  
Tel: (800) 239-2143

### II. HAZARDOUS INGREDIENTS N/A

### III. HEALTH HAZARD INFORMATION

#### A. EMERGENCY & FIRST AID

1. **EYES:** Flush with clear water for 15 minutes. Seek Medical Attention
2. **SKIN:** Rinse off with soap & water. Remove contaminated clothing.
3. **INHALATION:** Remove subject to fresh air. Seek medical attention if allergic response.
4. **INGESTION:** Drink large volumes of clear water or milk to dilute. DO NOT INDUCE VOMITING. SEEK MEDICAL ATTENTION.

#### B. EFFECTS OF OVER EXPOSURE

1. **EYES:** Any vapor contact with eyes may cause irritation. Organisms are non pathogenic but can cause infection.
2. **SKIN:** Can cause redness in individuals with history of dermal allergic reaction.
3. **INHALATION:** Enzymes can cause allergic response.
4. **INGESTION:** No effect if ingested in small amounts. Irritation of mouth, pharynx, esophagus and stomach can develop.

### IV. FIRE & EXPLOSION HAZARD DATA

- A. FLASHPOINT: N/A
- B. EXTINGUISHING MEDIA: Water Spray, CO2, Dry Chemical
- C. SPECIAL FIRE PROCEDURES: None required
- D. UNUSUAL FIRE & EXPLOSION HAZARDS: None

### V. PHYSICAL DATA

Boiling point: 100C  
Freezing Point: N/A  
Specific Gravity: 1.02  
Vapor pressure: Equivalent to Water  
pH- 1% Solution :7.5-8.5  
Solubility / Water: 100%  
Color & Odor: White/Pleasant

### VI. REACTIVITY DATA

- A. STABILITY: Stable
- B. CONDITIONS & MATERIALS TO AVOID: None.
- C. INCOMPATIBILITY: Strong acids, alkali, or oxidizing agents may inactivate biological cultures or enzymes
- D. HAZARDOUS POLMERIZATION: Will not occur.
- E. CONDITIONS TO AVOID: None

### VII. SPILL, LEAK & DISPOSAL PROCEDURES

- A. STEPS TO BE TAKEN IN CASE OF SPILL:
  1. Contain spill.
  2. Dilute with plenty of water and neutralize with vinegar.
  3. Wash all surfaces with clear water.
- B. WASTE DISPOSAL METHOD: Dispose of according to Federal, State and Local Regulations.

### VIII. SPECIAL PROTECTION INFORMATION

- A. SPECIFIC PERSONAL PROTECTIVE EQUIPMENT
  1. RESPIRATORY: Optional
  2. EYES: Goggles
  3. SKIN: Rubber gloves
  4. OTHER: Apron if desired.
- B. VENTILATION REQUIREMENTS: Local & Mechanical (General exhaust are adequate)

### IX. SPECIAL PRECAUTIONS

- A. HANDLING & STORAGE: Keep container sealed when not in use. Protect from extreme changes in temperature. Keep product in original container.
- B. OTHER: Triple rinse containers thoroughly with water before disposal. Do not re-use empty container. Follow label directions. Keep out of reach of children.

### X. TRANSPORTATION REQUIREMENTS

FORMULA: Blend  
DOT PROPER SHIPPING NAME: Non regulated  
DOT ID: N/A  
DOT HAZARD CLASS: N/A  
DOT PACKAGING GROUP: N/A

The information presented herein is based on data considered to be accurate and that reflects the requirements of the OSHA hazard communication standards in effect as of the date of preparation of this Material Safety Data Sheet. However, no warranty or representation, express or implied, is made as to the accuracy or completeness of the foregoing data and safety information. In addition, no responsibility can be assumed by vendor for any damage or injury resulting from abnormal use, from any failure to adhere to recommended practices, or from any hazards inherent in the nature of the product. Revised September 1999.